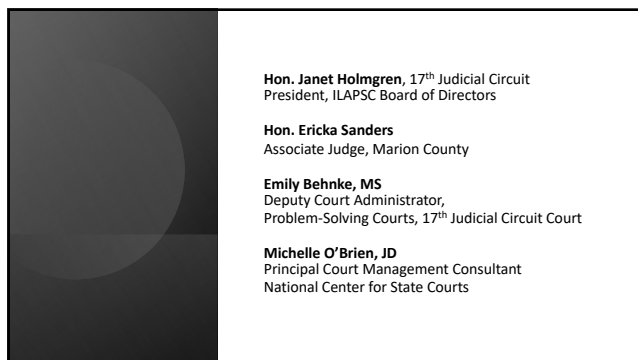
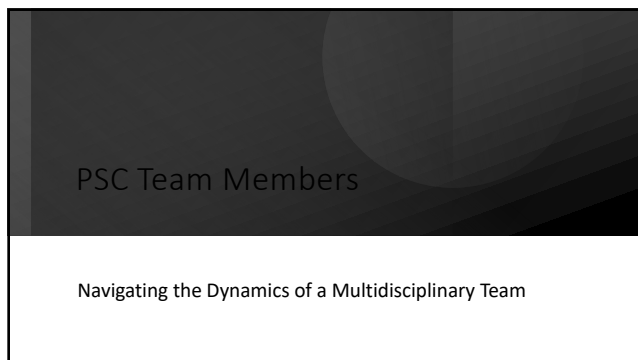


1



2



3

Defining a Problem-Solving Court

- Dedicated Judge
- Team of justice and clinical professionals
- Target population
- Voluntary
- Full continuum of treatment
- Frequent court appearances
- Frequent and random drug testing
- Incentives, sanctions and therapeutic adjustments
- Non-adversarial, collaborative team approach
- Intensive therapeutic and case management services coupled with intensive court supervision
- Team is cross-trained on justice and clinical subject matters

IL PSC Standards Section 1.1

4

Multidisciplinary Team

- Multidisciplinary team lead by the PSC Judge
- Manages the day-to-day operations
- Reviews participant progress
- Contributes information and recommendations
- Delivers and/or oversees the delivery of legal, treatment and supervision services

IL PSC Standards Section 1.1; NADCP Standard VIII

5

Defining PSC Team Member Roles and Responsibilities

- What is your role on the team?
- What knowledge do you need?
- What expertise do you bring to the table?
- All Team Members:
 - Relationship of trust- each person will do their job as defined
 - Rely on the expertise of each team member
 - Written policies and MOUs give parameters to work within

6

What the Standards Require of Team Members

- Adhere to the written Policy and Procedures and applicable MOUs.
- Utilize a non-adversarial, collaborative approach
- Actively participate in staffings prior to court sessions to exchange information and discuss responses
- Attend court hearings
- Regularly participate in trainings and team meetings
- Commit to a minimum of one year

IL PSC Standards Section 6; NADCP Standard VIII

7



The opinions, findings, and conclusions or recommendations expressed in this publication/program/exhibition are those of the author(s) and do not necessarily reflect the views of the Department of Justice or grant-making component. This project was supported by Award No. 2019-MU-BX-0018 awarded by the Bureau of Justice Affairs, Department of Justice.

8
